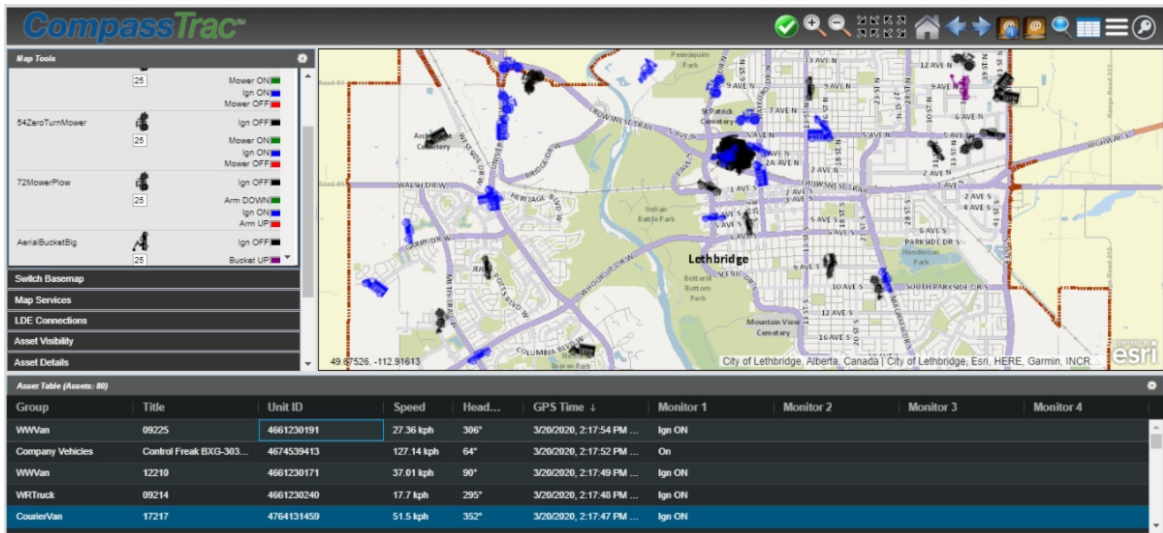


**What We've Been Up To**

**CompassCom**

**CompassCom's CompassTrac 7.5.1**

[Click here to view the CompassCom brochures](#)



| FEATURE ENHANCEMENTS                                     | 7.3.0 | 7.3.1 | 7.3.2 | 7.3.3 | 7.4.1 | 7.5.1 |
|--|-------|-------|-------|-------|-------|-------|
| Added Support for Motorola IMW REST                      | ✓     | ✓     | ✓     | ✓     | ✓     | ✓     |
| Added User base preferences                              | ✓     | ✓     | ✓     | ✓     | ✓     | ✓     |
| Support for Spanish Language                             | ✓     | ✓     | ✓     | ✓     | ✓     | ✓     |
| Support for Teams based groups in LDE                    | ✓     |       |       |       |       |       |
| Icon coloring based on GPS or Server Time                |       | ✓     | ✓     | ✓     | ✓     | ✓     |
| CompassLDE - override of LDE settings per device         |       | ✓     | ✓     | ✓     | ✓     | ✓     |
| Scheduled reports enhancements                           |       | ✓     | ✓     | ✓     | ✓     | ✓     |
| LDE Admin Search Field Enhancements                      |       |       | ✓     | ✓     | ✓     | ✓     |
| CompassLDE - TAIP P1 Output connector                    |       |       | ✓     | ✓     | ✓     | ✓     |
| CompassTrac - asset table enhancements                   |       |       |       | ✓     | ✓     | ✓     |
| CompassLDE - Cradlepoint enhancements                    |       |       |       | ✓     | ✓     | ✓     |
| CompassLDE - NMEA adaptor enhancements                   |       |       |       |       | ✓     | ✓     |
| Alerts - CompassTrac Release                             |       |       |       |       | ✓     | ✓     |
| Alerts - Geofence import from shapefile                  |       |       |       |       | ✓     | ✓     |
| Alerts - Real Time Dashboard                             |       |       |       |       | ✓     | ✓     |
| CompassTrac - increase refresh of ESRI map services      |       |       |       |       | ✓     | ✓     |
| CompassTrac - ESRI vector basemap enhancements           |       |       |       |       | ✓     | ✓     |
| CompassTrac - Connected breadcrumbs                      |       |       |       |       | ✓     | ✓     |
| Geocoding - ESRI online                                  |       |       |       |       | ✓     | ✓     |
| Geocoding - Geonames online                              |       |       |       |       | ✓     | ✓     |
| Geocoding - ArcGIS for server                            |       |       |       |       | ✓     | ✓     |
| CompassReports - geofence enhancements                   |       |       |       |       | ✓     | ✓     |
| CompassReports - printout to light color theme           |       |       |       |       | ✓     | ✓     |
| CompassReports - Motorola status report enhancements     |       |       |       |       | ✓     | ✓     |
| CompassReports - Average instantaneous rate enhancements |       |       |       |       | ✓     | ✓     |
| CompassReports - Speed calculation enhancements          |       |       |       |       | ✓     | ✓     |
| CompassTrac - Cirrus instantaneous rate enhancements     |       |       |       |       | ✓     | ✓     |
| CompassReports - Improved SQL queue performance          |       |       |       |       | ✓     | ✓     |
| BigINT - significantly increased DB storage              |       |       |       |       | ✓     | ✓     |
| Cityworks plugin   |       |       |       |       | ✓     | ✓     |

**New features include:**

- Alerts
- Scheduled Reports (option)
- Geofences
- Geocoding (option)
- User based preferences
- Spanish (option)
- TAIP connector (option)
- Cityworks plugin (option)
- Waze Integration

**Enhancements include:**

- Reporting accuracies
- Reporting performance
- Database size extensions
- Increase ESRI map refresh
- Admin user interface

[Contact the CompassCom Team](#)



The Control Freaks at CompassData continue to build the world leading archive of Photo-ID Ground Control Points (GCP). Whether you are working with satellite, aerial, drone or LiDAR imagery, GCPs ensure that your project contains “Ground Truth” – the data is tied to a specific, human-verified location on earth. With coverage in over 100 countries around the globe our archive of over 60,000 GCPs is growing daily. Remote sensing professionals utilize this control to support product production and QA/QC for their imagery and LiDAR projects. Join us for a virtual discussion of the status of the GCP archive and new collect capabilities around the globe. Company Founder Brant Howard will moderate a discussion with our staff about our coverage, ISO and FAA certified processes, accuracy levels, and support for multiple sensors. See how CompassData can be a quick, accurate and cost effective source of ground control to help your organization produce remote sensing data.

Speakers: Hayden Howard & Philipp Hummel  
Moderator: Brant Howard

[Register](#)

---

**CompassDrone**<sup>™</sup>  
a **CompassData** Company



# AERIAL BASED DATA ACQUISITION

*Empower YOURSELF with the Highest Quality Data!*



We want to thank again for joining us last month at the ROW Asset Mapping Exchange Virtual Conference, our session - **Aerial Based Data Acquisition**. If you missed the session, or would like to view the presentation again, you can watch it [here](#).

In the presentation, Brant Howard and Andrew Carey discusses where Drones fit into today's data acquisition plans to complement ground survey, mobile mapping and fixed wing aircraft. Understanding where drones make sense and if they are right tool for your asset management project.

---

## STAY CONNECTED WITH US ON SOCIAL

[CompassCom](#)



[CompassData](#)



[CompassDrone](#)



---

[CompassData](#) (303) 627-4058 | [CompassDrone](#) (303) 999-3078 | [CompassCom](#) (303) 680-3311