

Mavic 2 Enterprise Dual vs. Zenmuse XT2 for FLIR Imaging

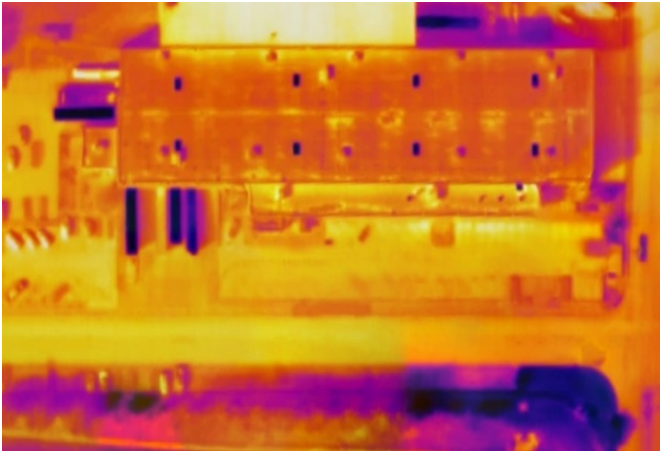
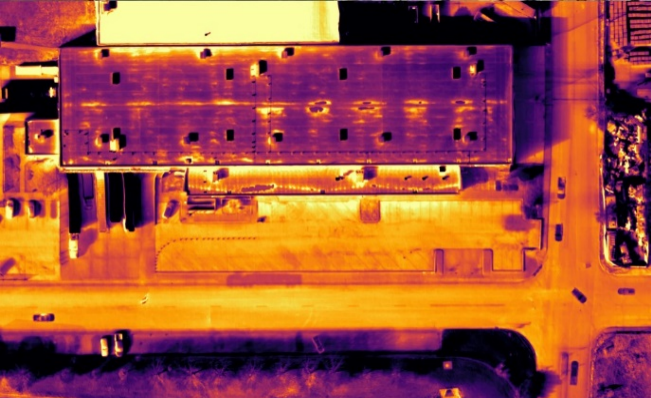


Thermal imagery is an increasingly useful and informative approach to observing our world. It has many uses ranging from safety, system, and infrastructure inspections to public health; thermal imagery is even already being implemented in the global response to COVID-19. Here at CompassDrone, we are well versed not only in the countless applications of FLIR imagery (Forward-Looking Infrared), but also the methods and tools used to capture said images and data. This article takes a brief look at two popular IR cameras and their subsequent products; the on-board thermal camera on the Mavic 2 Enterprise Dual, and the DJI Zenmuse XT2.

Mavic 2 Enterprise Dual

The *Mavic 2 Dual* has 2 built-in cameras (hence the name Dual), a visual camera and a thermal camera, instantly providing versatility at a relatively low price point. In this first thermal image, we see an orthomosaic composed from images captured with the Dual's thermal camera. One can see right away the functionality of this drone and its potential for a variety of uses. The IR imagery, especially when paired with the visual camera and the Dual's light weight and compact frame, make it a great choice for search and rescue missions.

This image is also a primary example that it can work well for thermal mapping applications. The affordability of the Dual also makes it a feasible option for smaller companies and teams looking for an entry level, thermal, eye in the sky.



Zenmuse XT2

Here we see another orthomosaic, this one composed of images from the DJI Zenmuse XT2. The first thing to notice is the crystal-clear quality of the image. Although it is a notable step up in price compared to the dual, that higher price brings with it this evidently higher quality in the final product, whatever that may be. With an adjustable isotherm, this camera can produce quality orthomosaics as well as live-feed thermal imagery and is ready to be the workhorse

for larger companies or any teams that would consider thermal imagery and thermography their bread and butter. The XT2 is ready to fly with any DJI Matrice out-of-the-box, and with our previously mentioned prowess in drones and thermal imagery, our staff at CompassDrone are ready to help your team take the next step in your thermal imagery projects and products.



Specifications are typical and subject to change without notice. CompassDrone does not accept liability for any error or omission in this document.